



Published by the San Pedro Chamber of Commerce  
and the Downtown Business Improvement District

[www.sanpedrochamber.com](http://www.sanpedrochamber.com)

## Inside

**Councilwoman Hahn on channel deepening project**  
See page 4.

**Port Executive Director Knatz on the port's busy summer schedule**  
See page 5.

**Annual Community Service Awards presented**  
See page 3.

**New economic policy leadership**  
See page 9.

**PBID and ACE District News**  
See pages 8-9.

**San Pedro teachers honored at luncheon**  
See page 11.

**Profiles of San Pedro businesses – Omelette and Waffle Shop & Slavko's Harbor Poultry**  
See pages 12-13.

## Mayor lauds community and port for strong clean-technology initiatives

### Los Angeles' top elected officials address community concerns at luncheon

by Sharon Creal

In accepting the San Pedro Chamber's 2009 Leadership Award for his *CleanTech Los Angeles* initiative, Los Angeles Mayor Antonio Villaraigosa raised the bar on the challenge ahead. Recognizing that "greening" the port, while simultaneously growing its economic value and job

opportunities is very difficult, the Mayor called himself an East Side Kid, and said that Angelenos don't run from a fight. "We meet adversity by getting up, wiping off the blood and keeping on going toward our goals, doing what we have to do."

Behind the Mayor's CleanTech initiative, Los Angeles and its Port



This photo and page 3 photos by Taso Papadakis

Mayor Antonio Villaraigosa spoke to a crowd of 350 at the San Pedro Chamber's Annual Luncheon on June 11th at the DoubleTree Hotel. Joining the Mayor (third from left) were (l.to r.) City Controller-Elect Wendy Gruel, Councilwoman Janice Hahn and City Attorney-Elect Carmen "Nuch" Trutanich.

are fast becoming the global template for implementing green technologies in a major city. He credited the San Pedro Chamber and Port officials for the great progress made this year in bringing green technology to the Port of Los Angeles. In April, Mayor Villaraigosa's Clean Truck program replaced 2,000 dirty diesel trucks with green vehicles that run on natural gas and electricity. He has also endorsed the Chamber's new non-profit San Pedro Bay Port Technologies Development Center (PTDC) initiative, having called it the

*continued on page 7*

## Golden State Pops concert draws hundreds of new visitors to historic Warner Grand Theater

### Record crowd enjoys superb performance of John Williams' music

by Linda Grimes

The Golden State Pops Orchestra brought their fifth season at the Warner Grand Theatre to a rousing close on Saturday June 13th and attracted the largest audience in their seven year history. By a show of hands, almost fifty percent of the 900 audience members indicated that they were new visitors to the theater.

*continued on page 7*



Photo by Joe Negro

### Your Board in ACTION

The San Pedro Chamber of Commerce Board of Directors took the following actions during the months of April, May and June.

#### April 2009

- With no further nominations from the General Membership, the Board declared the slate of new and returning Board Members for 2009-2010 as elected.
- New 3-year terms: Craig Andrich, Paula Bills and Ralph Perez, Jr.
- Returning for second 3-year terms: James Allen, Irene Mendoza, Anthony Pirozzi, Kevin Williams and Jayme Wilson
- Incoming Chair Jayme Wilson appointed Isaac Kos-Read and Rose Mary Callahan to 1-year terms
- The Board approved President/CEO Camilla Townsend's letter to the editor regarding the Los Angeles City Planning Commission's hearing on Ponte Vista. The letter commended the Commission and Councilwoman Janice Hahn for re-considering the project in light of a new Land-Use Plan.
- Upon recommendation from the Economic Development Committee, the Board approved a motion that stated: The San Pedro Chamber of Commerce recommends the adaptive reuse of the former Southwest Marine site on Terminal Island as the proposed Gambol Marine Center. It also recommends the retention of the present Land Use Classification that has been in place since 1918; and it recommends the modification of the Channel Deepening EIR to allow for only partially filling in of the South Slip at 240Z. A letter of support was sent to the Los Angeles Harbor Commission, and Chamber representatives spoke at the Commission hearings.

#### May 2009

- The Board heard a presentation by Rob Lowe, CEO, Lowe Hospitality Group, on Terranea Resort's request to the City of Rancho Palos Verdes for a deferral of a maximum of \$8 million dollars in Transient Occupancy Tax (TOT) for up to 27 months that would be used to help fund start up costs until the resort generates revenue and other loans can be secured. The TOT would be rebated back to the City of Rancho Palos Verdes with interest within 27 months. The Board approved support of Terranea's request citing the resort would generate local jobs and marketing opportunities for San Pedro.
- President/CEO Townsend drafted a letter of support and presented the letter at two hearings for the TOT request.
- Based on a recommendation from the Economic Policy Committee, the Executive Council approved support for two senate bills sponsored by Senator Rod Wright. Letters of support were sent to Senator Wright for Senate Bill 356 (Small Business Regulatory Flexibility), and for Senate Bill 696 (South Coast Air Quality Management District).

#### June 2009

- The Executive Board supported the expansion and the continued on-site sales of alcohol by Neil's Restaurant at 383 W. 5th Street. A letter of support was sent to the Los Angeles City Planning Department.

*The San Pedro Business Journal  
is a bi-monthly publication of the*

#### **SAN PEDRO CHAMBER OF COMMERCE**

390 West 7th Street, San Pedro, CA 90731  
Phone: (310) 832-7272 Fax (310) 832-0685  
info@sanpedrochamber.com  
www.sanpedrochamber.com

**OUR MISSION ...** to promote, support and advocate the interests of the business community by actively working to develop a vital and sustainable local economy that also enhances the social and environmental resources of the community.

#### **BOARD OF DIRECTORS**

Chair:

Jayme Wilson, *Spirit Cruises & Boardwalk Café*  
Chair-Elect & Co-Chair, Economic Policy:

Anthony Pirozzi, *The Boeing Company*

Treasurer:

Sal Sotomayor, *Bay Cities National Bank*

Chair, Business, Education & Arts:

Tony Cordero, *Conoco Phillips*

Chair, Beautification Committee:

Steve Kleinjan, *K-Line Marketing/Clean San Pedro, Inc.*

Chair, Marketing:

Mona Sutton, *Omelette & Waffle Shop*

President, Business Improvement District:

Eric Eisenberg, *Renaissance Group*

President, Arts, Culture & Entertainment District:

James Preston Allen, *Random Lengths News*

President, Port Technologies Development Center (PTDC):

Herb Zimmer, *PriorityOne Printing*

Board Liaison, Ambassadors:

Carol Mizrahi, *Mizrahi Enterprises, Inc*

Immediate Past Chair:

John Ek, *Ek & Ek Public Advocacy*

Craig Andrich, *SA Recycling*

Paula Bills, *Mattucci Real Estate*

Rose Mary Callahan, *Malaga Bank*

Mitch Harmatz, *Plaza Automotive Ctr & Park Plaza Shell*

Isaac Kos-Read, *Port of Los Angeles*

William Lyte, *Technoplex Group*

Irene Mendoza, *Svorinich & Associates, Inc.*

James O'Callaghan, *LA Inc.*

Ralph Perez, Jr., *7th Street Chop House*

Robert C. Santich, *Contessa Premium Foods*

Andrew Silber, *The Whale & Ale*

Tim Tess, *Pasha Stevedoring & Terminals LP*

Dwainia Tullis, *Lanta Salon*

George A. Van Buren, *Van Buren & Associates*

Kevin Williams, *Find Your Way Around L.A.*

#### **CHAMBER STAFF**

CEO: Camilla Townsend

Manager, Chamber Operations: Judith Blahnik

Financial Manager: Carolyn Brownell

Associate, Sales & Membership Services: Laura Duarte

Receptionist/Office Assistant: Wilma Going

Communications & Media Consultant: Sandy Bradley

Consultants: Linda Alexander, Sharon Creal

Interim Managing Director, PTDC: Jerry Miller

Publisher, San Pedro Business Journal: Herb Zimmer

# Annual community service awards announced by Chamber

## Leadership Award

### Mayor Antonio Villaraigosa

No stranger to the call for leadership, Los Angeles Mayor Antonio Villaraigosa has charged this city and its port to lead the world in developing critical green technologies. His CleanTech LA initiative has sparked a number of changes that put L.A. at the forefront of sustainable environmental efforts including the largest LED green streetlight program ever undertaken by a city, the country's largest solar power plan and a "Clean-Tech Corridor" just outside of downtown. "We need to build a future in which clean technology is as synonymous with Los Angeles as motion pictures or aerospace," he said in his State of the City address this year.



Antonio Villaraigosa

The Mayor has been a labor activist since the age of 15, and a public servant since 1994 when he joined the California State Assembly (later becoming its 63rd Speaker). In 2003, he won the 14th District City Council seat, and was elected Mayor of Los Angeles in 2005. We are honored to present Mayor Villaraigosa with the San Pedro Chamber of Commerce 2009 Leadership Award.

## Bold Vision Award

### Eric Eisenberg

President of the San Pedro Historic Waterfront District Property-owners Business Improvement District (PBID), Eric chooses to direct his considerable energies to developing San Pedro and building a PBID here because of the people, the town's historic relevance and the livable style of San Pedro, "the gem of Los Angeles." He notes that while San Pedrans may not always agree on issues, they share a strong local identity and sense of loyalty.



Eric Eisenberg

"Downtown San Pedro is what BIDs are all about," says Eric, "and BIDs are founded on the need for property owners to take responsibility for their communities." Eric works through the PBID to engage all property owners in the effort to provide a clean, safe environment that attracts consumers. President and CEO of the Renaissance Group, Eric serves on the Community Advisory Council and as Chair of the Community Redevelopment Agency's Design Review Advisory Panel – San Pedro Project; he also serves on the Boards of the San Pedro Chamber of Commerce and the Port of Los Angeles High School, and on the latter's Finance Committee.

## Business of the Year

### SA Recycling

George Adams, President and Moises E. Figueroa, Regional General Manager of SA Recycling, first met with Chamber CEO Camilla Townsend over two years ago to identify ways SA Recycling could be pro-actively involved in San Pedro affairs. Moises notes that the company was always committed to the



Moises Figueroa

idea of community, but before joining the Chamber, "it was basically just words." SA proudly supports many charitable organizations with donations and community service, including Boys and Girls Clubs of America, Canning Hunger, Goodwill Industries, the Leukemia & Lymphoma Society and many more.

SA's state-of-the-art recycling operation reduces both the release of harmful elements to landfills and the need for additional new ore mining. Citing the common goals of a clean environment, good jobs and increased economic opportunity, SA Recycling has presented the first of two pledged checks for \$25,000 to the San Pedro Bay Port Technologies Development Center.

## Restaurant of the Year

### Niko's Pizzeria

In December 2007, Deno Boosalis and Nick Tsoufoulas opened San Pedro's newest hotspot, Niko's Pizzeria – offering a fun, affordable night out with a big sense of community. Their attractive sports-themed restaurant on Sixth and Mesa features large booths, nine flat-screen TVs and an extensive food and beverage menu that goes way beyond their extraordinary pizza.



Nick Tsoufoulas

Nick, a graduate of the Southern California

Culinary Academy with a lifelong passion for cooking, helped his family run several Long Beach restaurants. Deno is a native son of San Pedro and veteran restaurateur, also with a long family tradition in the business. Both Deno and Nick care deeply about community and participate in many local charitable events. In the last year alone, these included the Randal D. Simmons Outreach Foundation fundraiser (in memory of the LAPD Officer slain in the line of duty in February 2008), and the Susan G. Komen Race for the Cure; they also donated to Beacon House for last summer's massive hillside cleanup.



Deno Boosalis

## ...and in other award news...

### The Omelette and Waffle Shop

has been named 54th Assembly District "California Small Business of the Year" by Assemblywoman Bonnie Lowenthal (see article on page 11)

### Cary Wight of Pirate Leathers

has been awarded a "2007-2008 Technology and Engineering Emmy Award" for contributions to the Emmy-Award winning Standardization of the ATSC (Advanced Television Systems Committee) Digital System.

## 4 City of Los Angeles



**From the  
Council Office  
by 15th District  
Los Angeles City  
Councilwoman  
Janice Hahn**

### Looking Toward the Future at the Port

The Port of Los Angeles' plan to deepen the main channel has been in process for some time. Part of that plan included filling the slips at Southwest Marine Terminal with contaminated soil from the dredging of the channel. When the project came before City Council, I used it as an opportunity to raise questions about the future of Southwest Marine Terminal and the possibility of rebuilding a shipyard there.

### Channel deepening and a shipyard too? Why not?

There has been a lot of misinterpretation of my actions related to the channel deepening project, and I want to set the record straight. From day one, I have always been supportive of deepening the channel to accommodate the next generation of ships, which will keep us competitive and keep good paying jobs on the docks. Delaying it was never an option.

As the Councilwoman who represents all of the Harbor area, it's my job to ask questions on behalf of the people I represent.

These questions have now led us to exploring the possibility of bringing a shipyard back to the Port of Los Angeles, either at Southwest Marine or another nearby site. There is wide support for this from the business community (including many San Pedro chamber members), the building trades, long-time Harbor-area families, Wilmington boat owners, the historical society and even former port engineers.

Everyone agrees that it's time to look at bringing back a state of the art shipyard to America's port and creating more plentiful and diverse jobs--something we desperately need in these tough economic times.

For generations, Tod's Shipyard created good jobs at the port and allowed for ships to be repaired right here in the Harbor. That kind of service has always been part of the charm of local businesses. But these days, the closest shipyard is over 100 miles away.

Since I first weighed in on this issue several months ago, I've always said that it was short-sighted to fill the last remaining operational slips in our harbor, and forever foreclose on the option of building another shipyard there.

Think of the possibility – there could be a day when we could again construct and repair large ships in San Pedro Bay – and be able to train a new skilled workforce.

After much discussion and negotiation, I think we've come to a compromise. At my urging, the City Council this week moved the channel deepening project forward--without delay--while also positioning ourselves to reopen a shipyard at the port.

## TASTE SAN PEDRO In

Point Fermin Park Gaffey and Paseo del Mar, San Pedro

### AFFORDABLE FUN FOR THE WHOLE FAMILY

Great Food...Wines, Beers, KetelOne Drinks...Non-stop entertainment  
Vendors...Artists Pavilion...Crafters...Children's Activities

### Featured Tribute Bands – see website for full band lineups

Friday, July 31...*Platinum Rockstars* – Tribute to *Journey*, *Bon Jovi*, and more

Saturday, August 1...*Petty Theft* – Tribute to *Tom Petty and the Heartbreakers*  
and *The Hollywood Stones* – Tribute to the *Rolling Stones*

Sunday, August 2...*The Age of Aquarius* – Tribute to the Late 60's  
and *Bella Donna* – Tribute to *Stevie Nicks* and *Fleetwood Mac*

Tickets/more information – [www.tasteinsanpedro.com](http://www.tasteinsanpedro.com)

or 310-832-7272

**\$1.00 discount/per ticket for tickets bought online**

**Use promo code SPJ**

**Friday, July 31, 2009 (Concert only)**

6:00 pm – 10:00 pm

**Saturday, August 1, 2009**

11:00 am – 9:00 pm

**Sunday, August 2, 2009**

11:00 am – 7:00 pm



## Port Updates by Port of Los Angeles Executive Director Geraldine Knatz, Ph.D.

### Time to Show Off the Town!

Summer has arrived and many of us are expecting out-of-town guests in the weeks ahead. We've got a lot to show off! I'm sure you will all agree that people never seem to tire of seeing the jaw-dropping sight of a massive, sparkling white cruise ship or a cargo-laden container vessel connecting the Port and San Pedro to all points around the world.

### Gateway Fountain show times extended for the summer season

And, of course, we have the fun, spectacular Fanfare Fountain. We just heard from a San Pedro native who was home for the weekend. She went down to the Promenade to see what all the excitement was about. Expecting to see a single fountain of water spouting from a "typical" pool of water, she reported to my staff that she was simply

dumbfounded by the fountain's splendor. That's a common reaction among locals and out-of-area visitors who see the fountain for the first time - and they often return to share it with family and friends.

We've expanded the show times. Through the end of November, a new daily summer/fall schedule is in place for the musical water displays. Every day from 10 a.m. to 10 p.m., the show is every 20 minutes, except for 12 noon to 1 p.m. and 8 p.m. to 9 p.m., when it runs every 10 minutes.

To make it easier (and more fun) to get to the fountain, our Red Cars are running from noon to 9:30 p.m., Friday through Sunday, as well. For more information on our Fountain shows, please see our website at [www.portoflosangeles.com](http://www.portoflosangeles.com).

You've probably noticed that a lot is going on along the waterfront at the south end of the Port. The 22nd Street Landing Park project will be completed by year's end. This scenic, open space area will cover a total of 18 acres and includes paved parking, about four acres of open grass area with lots of trees, restrooms, walking and bike trails, and crosswalks on 22nd Street.

Construction of the Cabrillo Way Marina is also well underway. This \$125 million project includes creation of 700 new slips for boats ranging from 28 to 130 feet in length. Miner Street will be realigned and widened from 22nd Street south. A mile of promenade starts at the 22nd Street Landing Restaurant and ends at the lifeguard dock near Berth 47 at the southernmost tip of the peninsula. This marina project provides enough work for an estimated 2,210 one-year full-time equivalent workers. Completion is scheduled for June 2011.

**Construction crews will be busy all summer on other port projects**

Unfortunately, this large a project requires that our construction trailers be positioned in the paved parking lot at 22nd and Miner St. Sorry for the inconvenience, but there is improved public parking for visitors and special events a little further to the east on 22nd at Signal. That lot was previously improved as part of our Waterfront Enhancements projects.

In Northwest San Pedro, a good portion of the North Gaffey Street Beautification Project is now complete, forming a half-mile pedestrian parkway and bike path on what used to be a dirt roadway shoulder between Gatun Street and Westmont Drive. Put on your walking shoes or grab a bike, and go check it out!

Enjoy your summer!

### Gateway Fountain Show Schedule

Summer/Fall (June 1 – Nov. 30)

#### Daily

10 a.m. – noon.....	every 20 minutes
Noon – 1 p.m.....	every 10 minutes
1 p.m. – 8 p.m.....	every 20 minutes
8 p.m. – 9 p.m.....	every 10 minutes
9 p.m. – 10 p.m.....	every 20 minutes
10 p.m.....	Fountain closed

# HARBORLiving

## ON NEWSSTANDS NOW!



- 30,000 Printed
- 84,000 Readers
- Online PDF
- 3 Month Shelf Life
- Inserted into *Random Lengths*
- At 500+ Locations

**Next Issue June 4**  
(San Pedro Harbor Home Tour Edition)

HarboRLiving Magazine is a special supplement to  
**RANDOM LENGTHS**  
HARBOR INDEPENDENT NEWS

310-519-1442 • [Reads@RandomLengthsNews.com](mailto:Reads@RandomLengthsNews.com)  
1300 S. Pacific Ave., San Pedro, Ca 90731

# 6 Economic Development

## Dynamic new leadership to guide Economic Policy Committee



**Anthony Pirozzi**

The state of the economy has shaken the core of our nation's financial system and our approach to investing in our businesses and ourselves. We have an opportunity and obligation to close the many short term issues that have a long term affect on San Pedro's local economy. Too many times we have experienced delays in progress due to indecision, self-

interest, lack of vision and trying to lead by consensus. Now is the time to make sound decisions based on three fundamental questions; 1) does it improve our quality of life, 2) does it makes good business sense, and 3) is it a strategic investment in our future? This approach will increase our momentum in continuing to develop San Pedro for the 21st Century.

I look forward to co-chairing the Economic Policy Committee with Elise Swanson. Elise brings experience and knowledge to this position and her perspective will be a great benefit to the committee. Together we will be developing key focus areas for the next year. Initially, we will focus on developing our waterfront, attracting locals to the many business districts across town, attracting new employers to invest in San Pedro, emphasizing the importance of educational excellence and investing in youth programs and facilities.

I look forward to working with you to shape the future of San Pedro! Feel free to email me at [apirozzi@yahoo.com](mailto:apirozzi@yahoo.com) with your comments and ideas.

**Elise Swanson**



I am very pleased to have been appointed by the San Pedro Chamber board of directors as co-chair the Economic Policy Committee with Anthony Pirozzi. It is going to be a challenging year for the San Pedro Chamber and community as our nation continues to face difficult economic times. As the committee co-chair, I believe that it will be especially important for our chamber to focus on identifying and supporting economic policies that foster job growth, create programs for business recruitment, and continue to attract development in order to keep San Pedro an economically viable and sustainable community.

In the next several months, our committee will be discussing areas of focus for the coming year. Suggestions by committee members have included: San Pedro waterfront development; workforce development and education; strategies for growing the economic base of downtown San Pedro; tourism and youth employment.

I welcome your ideas. Please join us for a committee meeting as we discuss moving San Pedro forward. We meet the second Tuesday of the month at 8:00 AM in the San Pedro Chamber Boardroom or you can email me your ideas and suggestions. I can be reached at [chamberideas@gmail.com](mailto:chamberideas@gmail.com). I look forward to seeing you at a committee meeting or hearing from you!



**San Pedro's British Restaurant and Pub**  
*Andrew & Adela Silber; David Juarez*  
[www.whaleandale.com](http://www.whaleandale.com)  
310.832.0363

## Lanta Salon

285 W. 6th Street, Unit 104  
San Pedro, CA 90731

A Natural Healing Arts Salon  
310.521-0828

Every Friday 9:00am -2:00pm • 6th St. from Pacific to Mesa

### San Pedro's Historic Downtown FARMERS MARKET

- Farm Fresh Produce
- Arts & Handmade Crafts
- Variety of Hot Food
- Field Cut Flowers
- Natural Honey & Nuts
- Baked Goods
- Kettle Corn



**Pacific L.A. Marine Terminal LLC**  
A Subsidiary of Plains All American Pipeline, L.P.



Vital for the economy...  
Building for the future...

[www.Pier400Berth408.info](http://www.Pier400Berth408.info)

## Villaraigosa

*continued from page 1*

“home of green companies serving our port” during his recent State of the City address.

“What we do here will affect the rest of the world,” the Mayor said, in conclusion. We must become the paradigm because of our global position, he said, noting that L.A. has been called the “Venice of the 21st Century,” the place where the world comes together. He also stated that L.A. is considered the “Capitol of the Pacific Rim” and the engine of the global marketplace.



*Newly appointed Harbor Commissioner Cindy Miscikowski was also present at the Chamber Annual Luncheon*

The Mayor stressed that through implementing green technology we can reach our goal to create good jobs that provide incomes on which people can live, have a home and raise a family. This is what the greening of the Port, and the rest of L.A. is all about, he said.

In an historic first, top elected officials, **City Controller-elect Wendy Gruel, City Attorney-elect Carmen “Nuch” Trutanich and Councilwoman Janice Hahn** all attended the Chamber’s Award Luncheon along with **Mayor Villaraigosa** and addressed the challenges that the City faces in the coming year from their individual perspectives.

## Golden State Pops

*continued from page 1*

To quote the Film Score Monthly Blog: “When you put Steven Allen Fox together with John Williams, you can feel the love. In fact with those two composers’ penchant for changing the way their music is heard, one might venture to say we are given a better concert. Certainly the impact of all this being played in a large, yet intimate theater like the Warner Grand; with the orchestra some 40 feet from you comes over more powerfully than through the binoculars and picnickers ambience at the Hollywood Bowl.”

GSPO brought the music of John Williams to life as a tribute to Maestro Fox’s favorite film composer; whose music for the film Hook, introduced him to the art of film music, composing and conducting. Patrons heard seldom performed selections from; Indiana Jones, Harry Potter, Hook, Angela’s Ashes, Star Wars, Schindler’s List and Cowboys.

For more information about the Golden State Pops Orchestra’s sixth season, please visit [www.GSPO.com](http://www.GSPO.com) and plan to join them for a free concert with amazing fireworks on Cabrillo Beach for the 59th Annual John Olguin Fourth of July Spectacular.

Reach 3500 active business and community readers...

Advertise in the  
**San Pedro Business Journal**

Call 310-832-7272 for information

Ad rates are posted on the Chamber website at:  
[www.sanpedrochamber.com](http://www.sanpedrochamber.com)



**John Ek**  
President

461 W. 6th St., Ste. 302  
San Pedro, CA 90731  
Tel. (310) 732-7900  
Fax. (310) 732-0242  
Cell (310) 947-6406  
John@ek-ek.com

[www.ek-ek.com](http://www.ek-ek.com)

Pacific Electric Lofts  
610 So. Main St.  
Penthouse 112  
Los Angeles, CA 90014  
Tel: (213) 239-9780  
Fax (213) 239-9784

## Rentals in San Pedro

**Employee Housing**

**The Cabrillo Hotel**

Rent 1 to 20 rooms by the month.

Retail at 437 W. 6th St. • 1850 sq. ft. @ \$1/Sq. ft.

Offices at 429 W. 9th St. @ \$525/mo. up

Vacant Lot, Heart of Downtown (429 W. 6th, 5700 sq ft) @ \$2700/Mo.

The Renaissance Group

310-732-1640

**Great Summer Entertainment**  
at the

**WARNER GRAND**  
**THEATRE**

**JULY & AUGUST**

**Movies – film stars – musicals**  
**dancing and singing kids**

Wed night movies at 6 & 9  
see a great new movie  
with your favorite date &  
eat out – you deserve it!

Special events – paranormal investigations  
music conductors’ camp – musicals  
Shakespeare

**DON'T MISS OUT ON THE FUN!!!**

[www.WarnerGrand.org](http://www.WarnerGrand.org)  
310.548-7672

# 8 San Pedro's Historic Waterfront District

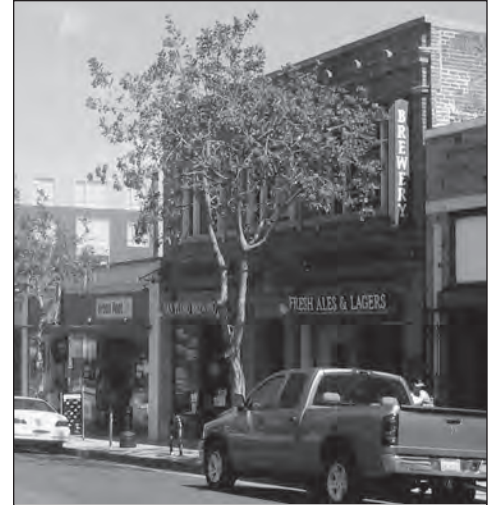
## Business Improvement District

### Historic Waterfront District Street Tree Trimming Underway



To enhance the competitiveness of San Pedro's business district, the Historic Waterfront District has begun the first of many steps in having core area street trees along Pacific Avenue and 6th, 7th, and Mesa Streets trimmed for the first time in many years as shown in these photographs.

The BID Board is preparing to have all street trees throughout the entire downtown area trimmed as soon as possible. The work that has been done is only the first step.



The BID is working with the City to develop a plan for root pruning and concrete repairs needed throughout the BID area. That would be a second phase of the work completed recently. Quite a difference!

### The BID Board in Action

The San Pedro Property Owners Alliance took the following actions during April and May:

- Approved two contracts with The Beacon House Association of San Pedro. The first provides for trash collection, sidewalk sweeping, litter pick-up, alley clean-up, and weed removal throughout the new BID area. The second provides for landscape maintenance services in the District.
- Approved a contract with Clean San Pedro, Inc. to provide services that compliment those provided by The Beacon House, and, in addition, to provide bulk item pick-up, graffiti removal, sticker and decal removal, paint matching, and other specialized "porter services" that will enhance business in downtown San Pedro.
- Approved a contract with Lupe Mendez Gardening Services to perform street tree trimming along Pacific Avenue, and 6th, 7th, Mesa, and Centre Streets as part of the BID Board's "Spring Cleaning for new business" project.
- Continued in-depth participation with the BID Security Patrol's efforts to create a safer downtown.
- Implemented a contract with Clean Streets Inc. to perform sidewalk pressure washing of all of the BID's core area sidewalks on a monthly basis; and, all other BID sidewalks on a quarterly basis.
- Implemented a contract with Clean Streets Inc. to sweep all BID streets every week.

### Want More Information about the Historic Waterfront District?

Copies of important BID documents including the Management District Plan, the Engineers Report, and all BID Board Meeting Agendas and Minutes are available on the Chamber of Commerce website:

[www.sanpedrochamber.com](http://www.sanpedrochamber.com)

### Next BID Meeting September 2nd

638 S Beacon Street, Room 462  
9am - 10:30am

### San Pedro Property Owners Alliance Board of Directors

**Eric Eisenberg**, President-Property Owner  
The Renaissance Group

**Jayme Wilson**, VP. & Secretary-Owner Operator  
Spirit Cruises/Ports' O Call Restaurant

**Alan Johnson**, Treasurer-Property Owner  
Jerico Development, Inc.

**Anthony Bilas**, Board Member-Property Owner

**Lauren Cohen**, Board Member-Property Owner  
Galaxy Commercial Holding

**Robin Hinchliffe**, Board Member-Property Owner  
Angels' Inc. (Art Curator)

**David Mathewson**, Board Member-Property Owner  
Port of Los Angeles

**B. Bennett Schirmer**, Board Member-Property Owner  
Rainbow Services

**Camilla Townsend**, Board Member-Property Owner  
San Pedro Chamber of Commerce

The San Pedro Property Owners' Alliance is a non-profit corporation formed to administer the San Pedro Historic Waterfront District BID under contract with the City of Los Angeles

**GALLERY AND ARTISTS' STUDIO TOUR MAP AVAILABLE AT GALLERIES**

**SAN PEDRO A.C.E. INVITES YOU TO AN ART WALK + STUDIO TOUR SATURDAY, JULY 18, 2009 3:00 TO 7:00 PM**

**GALLERIES**

- 1. TRANSVAGRANT @ WARSCHAW GALLERY**  
JAY MC CAFFERTY: NEW WORK  
600 SOUTH PACIFIC AVE 310.600.4873
- 2. GALLERY 478**  
AMERICAN TRIPTYCH:  
PHOTOGRAPHY BY ANN MITCHELL  
478 WEST 7TH ST 310.732.2150
- 3. BOARD ROOM GALLERY**  
RON LINDEN: SAMPLER  
SAN PEDRO CHAMBER OF COMMERCE  
390 WEST 7TH ST 310.832.7272
- 4. LAUREN KILGORE AT STUDIO 339**  
CONTINUUM: PAINTINGS BY HIROKO MOMII  
339 WEST 7TH ST 310.514.1238
- 5. 7TH STREET STUDIOS**  
THIRD LIFE: KENZI SHIOKAVA,  
BETSY LOHRER HALL, IVA HLADIS  
362 WEST 7TH ST 310.541.4354
- 6. GALLERY AZUL**  
MACHOLANDIA: PAINTINGS & DRAWINGS  
BY JONATHAN BUENO  
731 SOUTH PACIFIC AVE 310.831.2116

**RESTAURANTS**

- A. MARCELLO RISTORANTE**, Italian 470 W. 7th St. 310.519.7100
- B. JOLLY BURRITO**, Mexican 407 W. 6th St. 310.832.9196
- C. SACRED GROUNDS**, Coffee House 464 W. 6th St. 310.514.0800
- D. RAFFAELLO RISTORANTE**, Italian 400 S. Pacific Ave. 310.514.0900
- E. NIKO'S PIZZERIA**, Mediterranean 399 W. 6th St. 310.241.1400
- F. SENFUKU JAPANESE**, Sushi 380 W. 6th St. 310.832.5585
- G. BEACH CITY GRILL**, International 376 W. 6th St. 310.833.6345
- H. PORKY'S**, BBQ 362 West 6th St. 310.521.9999
- I. 6TH STREET BISTRO**, California Cuisine 345 W. 6th St. 310.521.8818
- J. NEIL'S PASTA & SEAFOOD**, 383 W. 5th St. 310.548.3495
- K. THINK CAFE**, Traditional 302 W. 5th St. 310.519.3662
- L. THE WHALE & ALE ENGLISH PUB**, 327 West 7th St. 310.832.0363
- M. MISHI'S STRUDEL**, Bakery & Cafe, 307 7th St. 310.832.6474
- N. PORT GELATO**, Ice Cream, Sandwiches 305 7th St. 310.514.9922
- O. NOSH CAFE**, Deli, breakfast, lunch, 617 S. Centre St. 310.514.1121
- P. SAN PEDRO BREWING CO.**, Traditional 331 6th St. 310.831.5663
- Q. PAPADAKIS TAVERNA**, Greek 301 W. 6th St. 310.548.1186
- R. STARBUCK'S**, Coffee & Bakery 285 W. 6th St. 310.548.5396
- S. JULIETTES** at Crowne Plaza, 601 S. Palos Verdes St. 310.519.8200

**SAN PEDRO ART, CULTURE & ENTERTAINMENT DISTRICT**

▲ GALLERIES  
○ RESTAURANTS

## ACE District Implementation Board

- James Allen**, *Chairman*  
**Linda Alexander**, *Central Neighborhood Council*  
**Ray Buffer**, *The Relevant Stage*  
**Ray Carafano**, *Artist/Gallery 478*  
**Melanie Jones**, *Little Fish Theatre Co*  
**Lauren Kilgore**, *Artist*  
**Ron Linden**, *Artist/Educator*  
**Susan McKenna**, *Nosh Café*  
**Liz Schindler-Johnson**, *Grand Vision Foundation*  
**Andrew Silber**, *Whale and Ale Restaurant*

## ACE Board Actions

### March 9, 2009

- Approved (unanimously) the Draft Request for Qualifications and its distribution to all Stakeholders by March 19, 2009

### April 13, 2009

- Approved (5-1) a One-Year Implementation Programmed Budget

### May 11, 2009

- Approved (unanimously) to accept all RFQ applications received by 6 PM on the May 11, 2009 Deadline
- Approved (unanimously) the RFQ review panel nominees:

- Robert Farrell**, Chairman
- George Van Buren**, Chamber Board Member
- Lauren Kilgore**, artist and ACE Board Member
- Susan Gray**, CRA Arts
- Camilla Townsend**, who later resigned due to conflict of interest.

Replaced by **Melanie Jones**, Little Fish Theatre Co.

### June 8, 2009

- Approved (unanimously) the Board appointment pro tem of **Linda Alexander** as Central Neighborhood Council Rep
- Approved (unanimously) Adjusted Programmed Budget for 2008-2009, 2009-2010
- Approved (unanimously) to endorse the San Pedro Artists Art Walk, July 18, 2009
- Approved (unanimously) to accept with gratitude the RFQ Summary Report by Review Panel Chairman Robert Farrell: From 17 submissions the following applicants were the first round to qualify for grants for ACE Plan projects: Artist Annie Appell Photography Gallery; Artist Ray Carafano Gallery 478; Artist Robin Hinchliffe Angles Ink.; Artist Ron Linden; fInDings Art Center; Gallery Azul; Golden State Pops Orchestra; Grand Vision Foundation; National Watercolor Society; Parkhurst Art Gallery; San Pedro Art Association; San Pedro Chamber of Commerce; The Relevant Stage Theatre Co.; Zhen Folk Chorus.

## ACE District Board Meetings

2nd Monday of the month and open to the public.  
Agendas and Minutes are posted on the ACE link at:

[www.sanpedrochamber.com](http://www.sanpedrochamber.com)

**Next Meeting: July 13, 2009**

# 10 Central San Pedro Neighborhood Council



THE CENTRAL SAN PEDRO  
NEIGHBORHOOD COUNCIL

## Working for Our Community

### Letter from President John Delgado

Dear Stakeholders,

The current difficult economic times have all of us being more than a little cost-conscious in planning our summer entertainment. With family-budgets in mind, your Central San Pedro Neighborhood Council (CSPNC) is looking forward to helping “the summer good times roll” for San Pedro by sponsoring the new WOW – Warner on Wednesdays film series. Each Wednesday from June 17th through September 9th, a quality movie will play at the historic Warner Grand Theatre. The movies were selected so there is something for everyone—children, teens and adult audiences.

The WOW film series is being sponsored by CSPNC in cooperation with Ray Buffer, Producing Artistic Director of the Relevant Stage Company and Lee Sweet of the City of Los Angeles Cultural Affairs Department.

Many of you may remember in years past, the Warner Grand offering bargain movie nights. WOW is intended to revive the spirit of those days providing an inexpensive night out for children, teens and adults of all ages.

Please remember, the purpose of WOW is fun. The Central San Pedro Neighborhood Council (CSPNC) wants to encourage all families to enjoy San Pedro’s distinctive downtown. Think WOW.... Think the arts....Think shopping....Think truly great eating! WOW—what better place to start the fun than a movie at the Warner Grand!

In launching the WOW film series, the CSPNC seeks to introduce many of our stakeholders to the Warner Grand Theatre and the important role it has in attracting business and tourism to Central San Pedro. WOW also will help the CSPNC to develop its relationship with the City of Los Angeles Cultural Affairs Department which operates the Warner Grand, thus strengthening our stakeholders’ impute in the programming and use decisions of local city owned venues. Publicizing WOW also gives CSPNC excellent opportunities to reach out to other neighborhood councils, civic organizations, artists and all those interested in San Pedro’s emergence as a unique arts community. The Council looks forward to creating lasting relationships that continue and expand its commitment to the arts in San Pedro.

Hey, let’s get back to the fun. I look forward to greeting friends and neighbors strolling to and from the Warner Grand on Wednesday evenings. WOW will bring a lot of fun to this year’s hot summer nights.

### Investing in Central San Pedro

At its April 2009 meeting, The Central San Pedro Neighborhood Council approved grants supporting a number of projects enriching the quality and enjoyment of community life including the Warner Grand ceiling restoration (\$3,000); the Los Angeles Maritime Museum’s Children’s Interactive program (\$2,500); the annual Fourth of July Celebration of the Cabrillo Beach Boosters (\$2,500); the annual Point Fermin Shakespeare by the Sea performances (\$2,500); and the Beacon House Summer Block Party (\$500).

# WOW

## Warner On Wednesdays

Movie Showings

6 pm and 9 pm - \$3 per person

\$10 Date Night Special: 2 small sodas

2 small popcorn & 2 tickets (Save \$6!)

July 15th – **Fast & Furious** – PG-13

July 22nd – **The Dark Knight** – PG-13

July 29th – **Bedtime Stories** -- PG

August 5th – **The Sandlot** -- PG

August 12th – **Marley & Me** – PG-13

August 19th – **The Wiz** - G

August 26th – **Secret Life of Bees** – PG-13

September 2nd – **Medea Goes to Jail** – PG-13

September 9th – **Coraline 2D** -- PG

**Contact: Central San Pedro Neighborhood Council at 310-918-8650 or [ksmith@klct.com](mailto:ksmith@klct.com)**

**Stakeholder meetings** are held on the second Tuesday of each month at the Port of Los Angeles High School, 250 West 5th Street at 6:30pm.

**Finance Committee Meetings** are held the third Monday of each month in the upstairs meeting room at the Whale and Ale, contact Linda Alexander; [treasurer@sanpedrocity.org](mailto:treasurer@sanpedrocity.org)

**Agenda Setting, Land Use Planning, Outreach and Arts & Culture Committees meetings;** times, dates and locations can be found on the CSPNC website: [www.sanpedrocity.org](http://www.sanpedrocity.org)

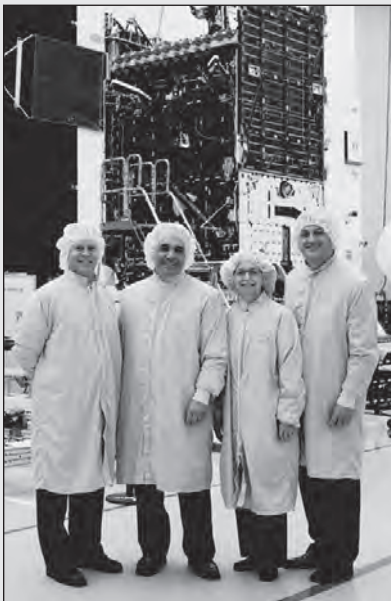
## Recognition Luncheon honors San Pedro's best teachers

On Friday, May 15, 2009, the Business/Education/Arts Committee held its annual Teacher Recognition Luncheon at Ports O' Call Restaurant. Each year, businesses and community organizations sponsor an administrator and honored teacher from San Pedro's public, private, and parochial schools. This year's honorees were:

**Kristine Evans** *Angel's Gate High School*  
**Brenda Hargrave** *Bandini Street Elementary School*  
**Serrelida Spangler** *Barton Hill Elementary School*  
**Elisa Morreale** *Cabrillo Avenue Elementary School*  
**Jacqueline Zuanich** *Christ Lutheran School*  
**Sharon Laney-Agu** *Cooper Community Day School*  
**Lucie Thorsen** *Crestwood Elementary School*  
**Tamara Marino** *Dana Middle School*  
**Fran Buzzell** *Dodson Middle School*  
**Kathlyn Coffey** *Fifteenth Street Elementary School*  
**David Samuel Barrett** *Harbor Community Adult School*  
**Leslie Acuña** *Harbor Occupational Center*  
**Phyllis Kambarian** *Holy Trinity School*  
**Kate Kentera Veljkovic** *Leland Street Elementary School*

**Charrisse Taylor** *Mary Star of the Sea Elementary School*  
**Brian O'Keeffe** *Mary Star of the Sea High School*  
**Judy Garcia** *Park Western Place Elementary School*  
**Nichole Sakellarion** *Point Fermin Elementary School*  
**Annie Monkowski** *Port of Los Angeles High School*  
**Rachel Leatherbury** *Renaissance School for Arts & Sciences*  
**Myrna Everhart** *Rolling Hills Preparatory School*  
**Sandy Wood** *San Pedro High School*  
**Kathy Yoshida** *Seventh Street Elementary School*  
**Sheri Trudnich** *South Shores Arts Magnet School*  
**Amy Di Stefano** *Taper Avenue Elem. & Tech Magnet*  
**Kristen Wade** *White Point Elementary School*  
**Pearl Cherry** *Willenberg Special Education Center*

The Committee met in June to plan for 2009-2010. Co-chair for the past three years, Sandy Bradley will be stepping down, and Linda Grimes will be the new Co-chair along with Co-chair and Board of Directors liaison, Tony Cordero.



### Officials tour Boeing satellite facility

Boeing Space and Intelligence Systems (S&IS) is the world's leading manufacturer of geostationary satellites. The factory, known as the Satellite Development Center, (SDC) is headquartered in El Segundo, Calif. Boeing manufactures satellites that provide communications across the world, such as DirecTV and XM Radio. The Boeing Company is a Corporate and Community Partner of the San Pedro Chamber.

*Shown on a tour of Boeing's SDC are (l. to r.) Gordon Teuber, office of Councilwoman Janice Hahn; Anthony Pirozzi, Boeing Company and San Pedro Chamber Board member; Camilla Townsend, San Pedro Chamber President/CEO and Jack Baric, San Pedro Chamber Board member.*

FRESH LAGERS & ALES  
GREAT FOOD • LIVE MUSIC

# SAN PEDRO

BREWING COMPANY

**JAMES BROWN**  
Owner

310.831.5663 • 310.514.3416 Fax  
331 W. 6th St., San Pedro, CA 90731  
jbbeer@msn.com  
www.SanPedroBrewing.com

# PLAZA AUTOMOTIVE CENTER

We know you. We know your car.



[www.ParkPlazaAutomotive.com](http://www.ParkPlazaAutomotive.com)

#### Automotive Service Hours:

Mon-Fri: 8am - 5pm

Saturday: 8am - Noon

All major credit cards accepted

**Park Plaza Shell**  
**990 N. Western Ave • San Pedro**  
**(310) 831-2888**

## Omelettes, Waffles and Standup Citizens

### San Pedro Restaurant Wins Small Business Honor in Sacramento

by Sharon Creal

If there's one thing Mona Sutton and Leslie Jones prove, it's that you can build community as you grow your business, and that both go better approached as a single goal. Named this year's "California Small Business of the Year" for District 54 by Assemblywoman Bonnie Lowenthal, the Omelette and Waffle Shop has been a San Pedro fixture for 14 years. It often serves as an unofficial meeting room for many San Pedro organizations and committee members. "I chose the Omelette and Waffle Shop as the 54th District Small Business of the Year because it is much more than a business. You get much more than food there," Ms. Lowenthal said recently. "You can really plug into the community."

Along with their tireless effort to provide great food and a convivial meeting place, Mona and Leslie work day and night to create a safe, clean environment in San Pedro. Given the Shop's central location (at 11th and Gaffey), they see the best and worst of what a busy metropolis has to offer. They've encouraged their business neighbors to join them as they combat graffiti and other vandalism, drug-trafficking and, along with such local organizations as Boys and Girls Club and Toberman Settlement House, helped create the "Safe Passage Program." This identifies safe routes and havens so children can get to and from school safely and without incident, and features

a phone call/email tree that alerts students and business owners of conflict brewing—before it happens—enabling intervention. Mona and Leslie have worked to bring people together to work tactically on problems, getting them in the same room to discuss their goals and perspectives face-to-face. "Once everybody gets to know each other," says Mona, "there's much less enmity, so we can find common ground and start to get things done."

Community activism has long been important to the Omelette and Waffle Shop's owners, who look not at just their storefront, but at the whole block, area and city. "Both Mona and Leslie have been very active and productive citizens of San Pedro," Ms. Lowenthal said. "They are not afraid to step up and work to improve their neighborhood and empower their community. We are lucky to have them in the 54th District."

Their accomplishments are not all civic in nature, however. The Omelette and Waffle Shop menu features scores of omelette varieties and you can still design your own. There are also, of course, waffles, salads, sandwiches, an a la carte menu, and a fun and friendly wait staff you want to talk to, although you usually have to catch them on the fly. Clearly this is an establishment run by two women who give a strong work ethic a great name. Congratulations, and thanks for all you do for San Pedro.

# LIVE!

at the **Grand Annex**

An intimate listening room.

434 W. 6th St., San Pedro  
310.833.4813

world music • americana  
chamber music • classic jazz  
• latin rhythm •  
Japanese fusion • children's  
concerts • more

[www.grandvison.org](http://www.grandvison.org)  
Proceeds to benefit  
the historic Warner Grand

## We'll Make Your Business Life Easier...



Sal Sotomayer  
Executive Officer  
San Pedro Office



Lori Terzoli  
Customer Relationship Officer  
San Pedro Office

*"We appreciate the opportunity  
afforded us to serve our community  
for over 19 years."*



**Bay Cities National Bank**



The Community Business Bank of the South Bay

28902 South Western Avenue, San Pedro, CA  
310-832-1984 • Open Mon-Thur 9-5, Fri 9-6, Sat 9-1

**Our Neighborhood Offices:**

**Redondo Beach** • Carol Lowry 424-241-1111

**Peninsula** • Bobbi Jones 424-241-1301

**Torrance** • Nicole Swain 424-241-1513

**Manhattan Beach** • Isela Buenabad 424-241-1402

**San Pedro** • Nancy Andrews 424-241-1200

**Website** • [www.baycitiesbank.net](http://www.baycitiesbank.net)

# Slavko's takes the "eco-nomical" lead with solar installation

by Judith Blabnik

Slavko's Harbor Poultry has been a member of the San Pedro Chamber for nearly 40 years and owner/partners Jim and Brian Frlekin, Chef David Welle and Vinny Menighino are determined to continue growing the landmark business. In May they completed a rooftop installation of 157 solar panels. "At first I was scared of the cost of the project," admits Frlekin, "but my son Brian convinced me we couldn't afford not to do it."

Frlekin gladly reports that the \$250k cost has been offset by a DWP rebate of \$110k, a 30% Federal tax credit and a likely 30% pro-rated appreciation on the total cost – a write off for the first year. And as hoped, the actual monthly savings are significant. According to the electric bill one month after the installation, the panels generated enough power to reduce the usual amount due of \$1000 by over two-thirds to \$300.

Reward from risk is a theme in this family owned business. During the 20 years following World War II, Jim's father, Slavko Frlekin and his partners, built Harbor Poultry into a premier city wide source for live and fresh processed poultry and legendary spit-roasted chicken. In the 60's however when such businesses

lost licenses to sell live poultry, Slavko's faced a change or die challenge.

About that time, national franchises Chicken Delight and Colonel Sanders Kentucky Fried Chicken began advertizing locally about the mouthwatering joy of convenient crispy chicken, and Slavko's sons Jim and Ray saw clear opportunity. They convinced their dad to purchase a fryer, and to use his prized cooking talent to develop a unique spice recipe for chicken and potato nuggets. "Pretty soon," says Jim, "every time a commercial for Kentucky Fried or that don't cook tonight jingle aired, we could count on customers packing our place within the hour."



The store at 1224 Pacific Ave has since survived recessions to remain the go-to-spot for the freshest and finest tasting fried chicken and potato nuggets plus a wide array of specialty prepared meats and salads.

To add to the eco-friendly future of Slavko's— yet another risk; Frlekin, with help from the Community Redevelopment Agency will soon expand to the space next door. Removing the north wall, renovating the interior and façade, will double the shop's size and provide both eat in and take out service. Our eyes are on you, Slavko's!

## Spirit Cruises

*The Best on the Waterfront!*

(310) 548-8080

Dinner Cruises • Harbor Cruises • Private Parties

PORTS O'CALL VILLAGE • SHORELINE VILLAGE

*Rediscover*

## WEYMOUTH CORNERS

Shops with Character

SATURDAY, JULY 18, 2009

SPECIAL RIBBON CUTTING CEREMONIES AT NEW SHOPS

12:00 NOON – 1:30PM


MUSIC AND SPECIAL SALES

*Weymouth Corners, invigorated with new businesses:*

- Alva's Music - newly expanded space has added many new product lines as well as instrument instruction
- ▲
- Grieco's - This 35 year old family business recently moved to Weymouth Corners.
- ▲
- Fleur de Lys - a beautifully re-decorated space with contemporary floral designs
- ▲
- Alphabiotic Life Enhancement Center - this new center provides stress relief and recovery
- ▲
- Mia Sorella Hair Salon - the latest in hair care

## A Safe Place to Bank!



- Bauer Financial Inc. 5 star rating 
- Superior Level with IDC Financial Publishing Inc.
- Most Profitable LA County based Savings Bank  
(as quoted in the Los Angeles Business Journal 2nd Quarter 2008)



1460 West 25th Street, San Pedro, CA 90732 310-732-1100 malagabank.com



Vue is a proud member of the San Pedro Chamber of Commerce



Hi-Rise Waterfront Living  
in Old Town San Pedro  
[www.Vue-Living.com](http://www.Vue-Living.com)

## SA Recycling Is Proud To Partner With The San Pedro Bay Ports As They Move Forward On Green Initiatives

SA Recycling is a full service scrap metal recycling company with multiple locations located throughout California, Arizona, Nevada and Mexico.

All of our operations utilize environmentally sound practices and meet the highest standards in quality control, environmental health and safety management.



**GOT SCRAP?**<sup>®</sup>

901 New Dock Street  
Terminal Island, CA 90731  
310-221-4900



## These new members have invested in the future of their community

### ACCOUNTING & INCOME TAX

J.W. Lewis  
Wyatt Lewis  
3608 S. Carolina Street  
San Pedro, CA 90731  
(310)766-4370 Fax (310)999-6589

### HOTELS

Terranea Resort  
Terri Haack  
100 Terranea Way  
Rancho Palos Verdes, CA 90275  
(310)265-2800  
thaack@destinationhotels.com

### INDIVIDUALS

Hal M. Mickleson  
PO Box 20062  
Stanford, CA 94309  
(650)868-2938

### LEGAL SERVICES

Law Office of John Drooyan  
John Drooyan  
One World Trade Center, Suite 800  
Long Beach, CA 90831  
(562)983-8070 Fax (562)983-8072  
www.drooyanlaw.com

# WELCOME!

### PAYROLL SERVICES

Paychex  
Catrina Falbo  
200 E. Sandpoint, Suite 100  
Santa Ana, CA 92707  
(714)309-0939 Fax (866)602-5765  
www.paychex.com

### PHOTOGRAPHY

John Drooyan Photo & Video  
John Drooyan  
285 W. 6th Street  
San Pedro, CA 90731  
(310)309-9430  
www.drooyan.com

### PICTURE FRAMING

Picture Frame Warehouse  
David Zerell  
28901 S. Western Avenue, #213  
Rancho Palos Verdes, CA 90275  
(310)547-0793 Fax (310)547-4987

### REAL ESTATE DEVELOPERS & INVESTORS

Team Company, Inc  
Keith Bohr  
221 Main Street, Suite S  
San Pedro, CA 92648  
(714)536-5888 Fax (714)536-5889

### RECREATION

Ice Chalet  
Rick Garcia  
550 Deep Valley Dr.  
Rolling Hills Estates, CA 90274  
(310)541-6630 Fax (310)541-8674

### RETAIL

Maral Designs  
Maral Malikyar  
331 W. 7th Street  
San Pedro, CA 90731  
(310)418-0109  
maraldesigns@homestead.com

## MEMBER ANNIVERSARIES

### JUNE - JULY

We thank our renewing members for their continuing support of the Chamber and its programs.

### 51-60 YEARS

Union War Surplus

### 41-50 YEARS

Allied Waste Services #902

### 31-40 YEARS

Martin, David, DDS

### 21-30 YEARS

Beacon House Assn. of San Pedro  
ERA Golden West Realty - Franz Dittrich  
General Steamship Corp., Ltd.  
The Grand Emporium  
The Grinder Restaurant  
Honey, Linda M., CFP, EA  
O'Brien & Martinetto, CPA'S  
Tri-Marine Fish Company, LLC

### 11-20 YEARS

Banning Residence Museum  
Christ Lutheran Church & School  
DeTu Salon International

Raffaello Ristorante  
Rainbow Services  
San Pedro Elks Lodge #966  
Southern California Edison  
Urban Feet

### 1-10 YEARS

A Plus Fingerprinting & Notary Serv  
A-1 All American Roofing Co., Inc.  
American Merchant Marine Veterans Memorial  
BNSF Railway Company  
Baric Media & Entertainment  
Carlson, Katy  
Chapman Business Services  
Community Outreach Promoting Emerge  
Danielle Whitney's Math Tutoring  
ERA - Golden West Realty -Paul & Lisa  
Kidder  
Glover Insurance Agency-Allstate  
Lee Homes  
Lisa's Floral Designs  
Niko's Pizzeria

### San Pedro Chamber Annual Membership Dues

# of Employees	Rate per Year
1-5 .....	\$240
6-10 .....	290
11-20 .....	350
21-50 .....	450
51-100 .....	680
101-150 .....	780
151-200 .....	890
201-300 .....	1000
301-600 .....	1750
601+ .....	2500
Individual.....	90
Non-profit.....	140
Home-based.....	170
Associate.....	90

For information or to join:  
[www.sanpedrochamber.com](http://www.sanpedrochamber.com)

PartyLite Candles and Gifts  
Port of Los Angeles High School  
Pre-Paid Legal Services  
Santich Investment Services  
South Shore Plumbing  
South Shores Flowers & Gifts  
Southwest L.A. County SBDC  
Up & Running!  
Vopak

**San Pedro Chamber of Commerce**  
thanks its  
**Corporate & Community Partners**

Port of Los Angeles	Diamond
Community Redevelopment Agency	Diamond
Supervisor Don Knabe, 4 <sup>th</sup> District	Silver
Councilwoman Janice Hahn, 15 <sup>th</sup> District	Silver
Jerico Development, Inc.	Silver
VUE	Silver
Ports O'Call Restaurant and Spirit Cruises	Silver
Albertsons Market	Bronze
The Boeing Company	Bronze
ConocoPhillips Company	Bronze
Gambol Industries, Inc.	Bronze
Malaga Bank	Bronze
Park Plaza Automotive	Bronze
Plains All American Pipeline, LP	Bronze
Ponte Vista San Pedro	Bronze
SA Recycling	Bronze

**Business Counseling at the Chamber**

**Mondays**

9:30am -12:00 noon • Call 310-832-7272 for appointment

**Downtown Farmers Market**

**Fridays**

9:00am-2:00pm • 6th Street, between Pacific & Mesa



390 West 7th Street, San Pedro, CA 90731

*Change Service Requested*

PRST STD  
U.S. POSTAGE  
**PAID**  
SAN PEDRO, CA  
Permit No. 78

For a continuously updated calendar of community events and resources go to:

**[www.sanpedrochamber.com](http://www.sanpedrochamber.com)**

*Many thanks to the House of Hope for their assistance in distributing this publication!*



Printed on Forest Stewardship Council certified paper from sustainable forests.

 **PROVIDENCE**  
Little Company of Mary  
Medical Center  
San Pedro

**New Name Same Compassionate Care**

Little Company of Mary is excited to announce that after 10 years of successfully joining with Providence Health & Services in one Mission, we are now joined together in name.

We are dedicated to responding to our community's needs at our facilities and through outreach programs to the most vulnerable in our surrounding neighborhoods.



1.800.618.6659 • [www.lcmweb.org](http://www.lcmweb.org)